

Organigramma Proposto

2022 - 2024

718 - ASST PAPA GIOVANNI XXIII

Sistema Socio Sanitario



Regione
Lombardia

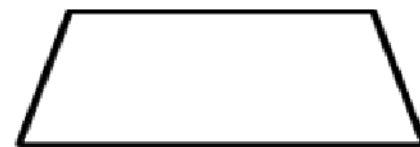
Legenda



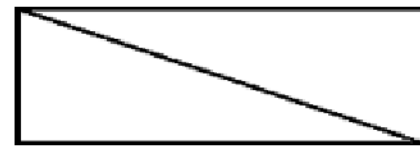
Dipartimento Gestionale



Dipartimento Funzionale



SC – Struttura Complessa



SSD – Struttura Semplice Dipartimentale



SS – Struttura Semplice



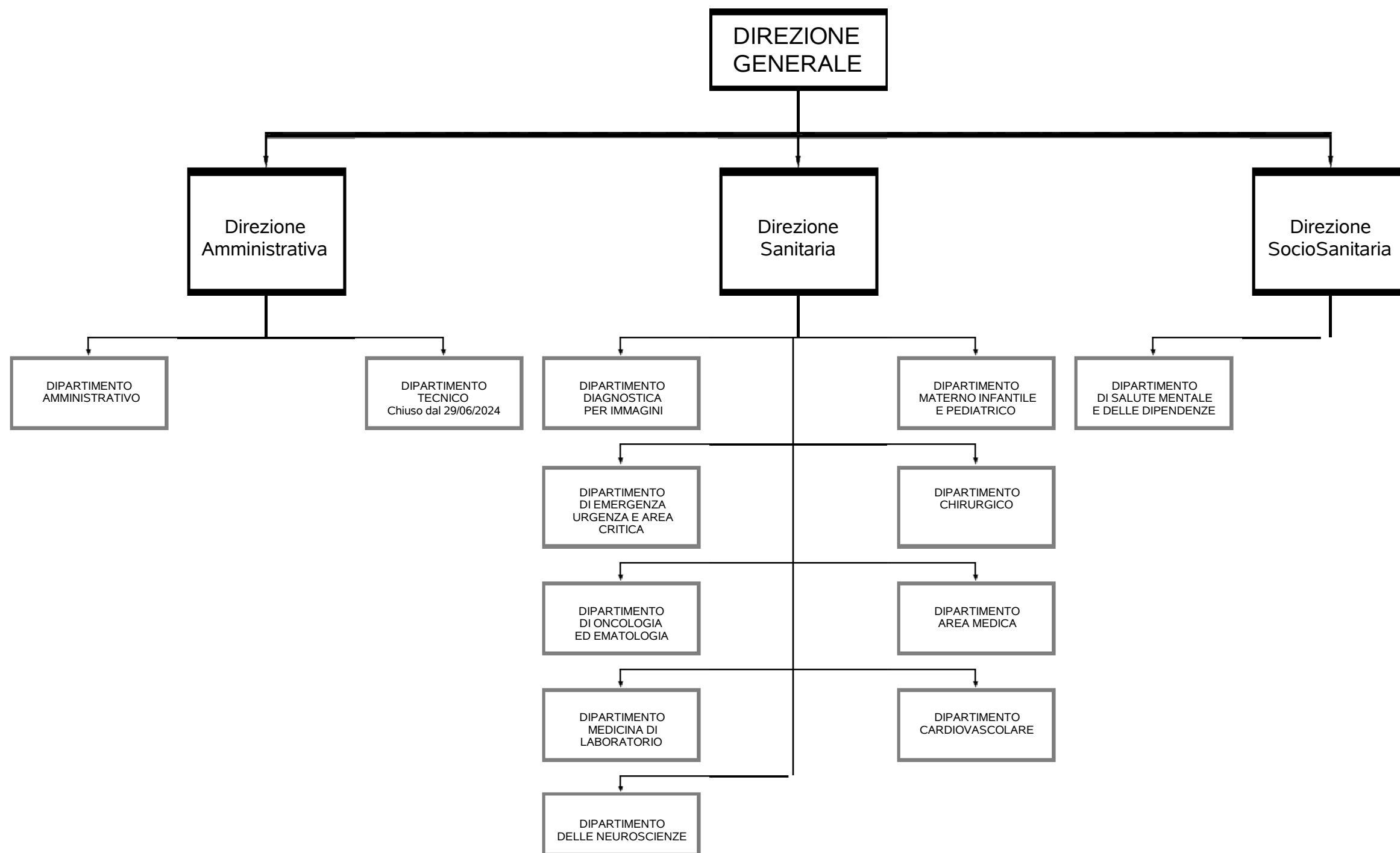
SD – Struttura Semplice Distrettuale

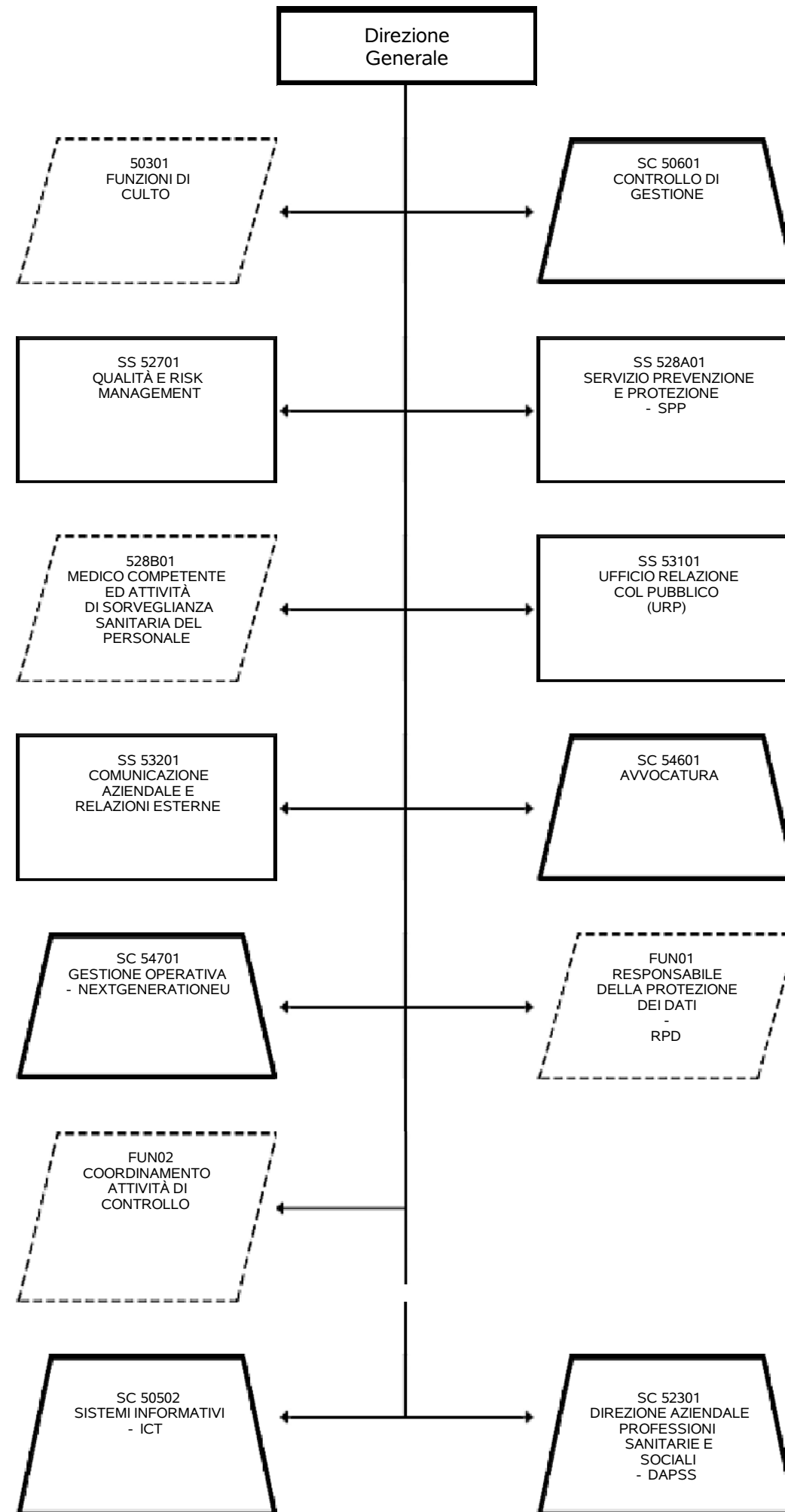


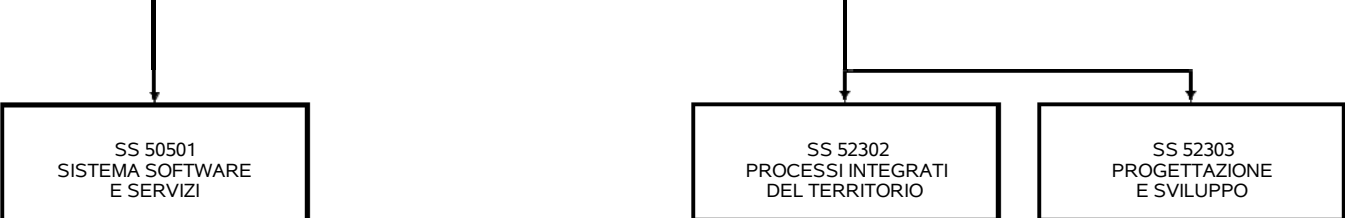
Funzione

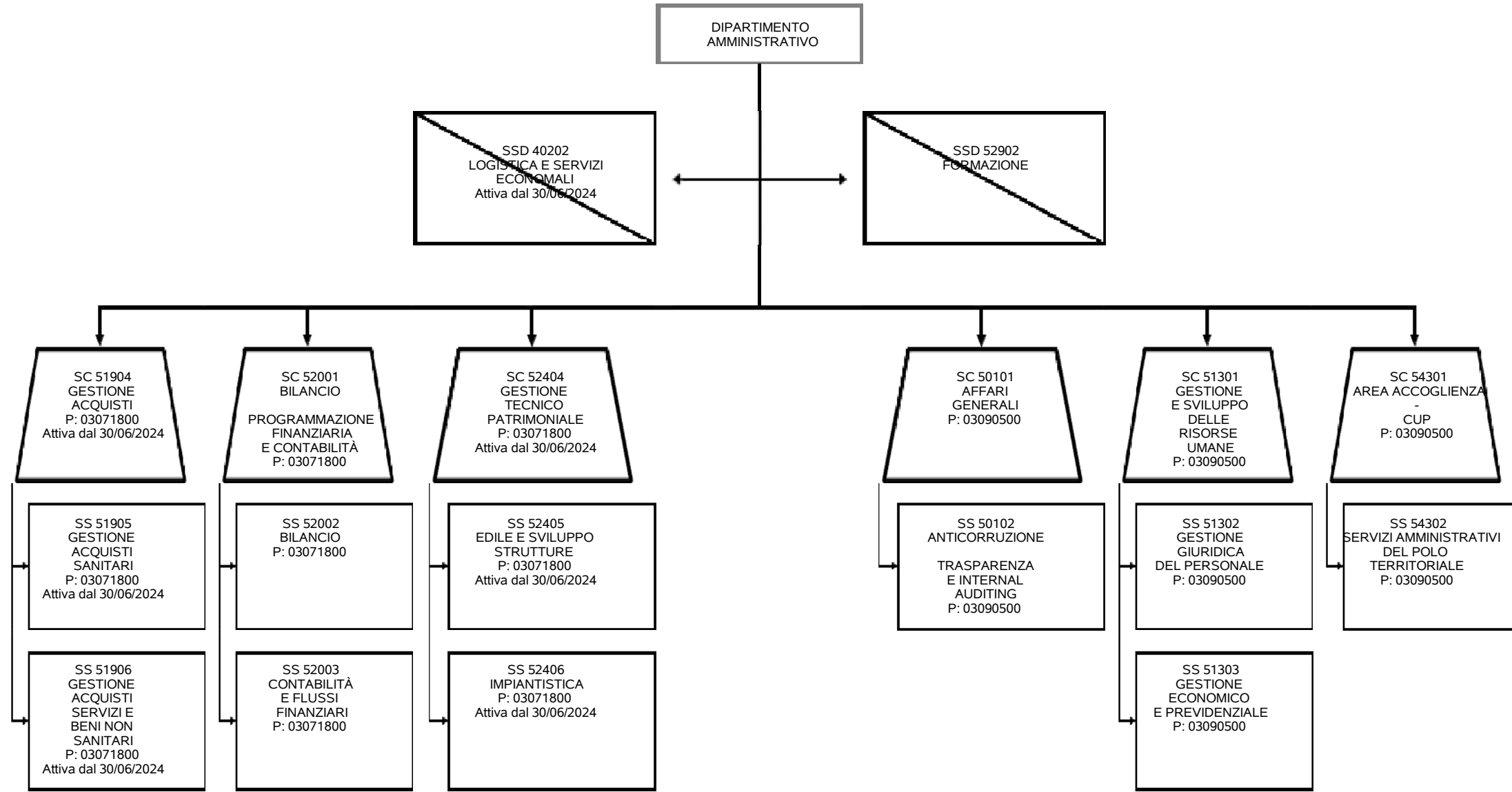


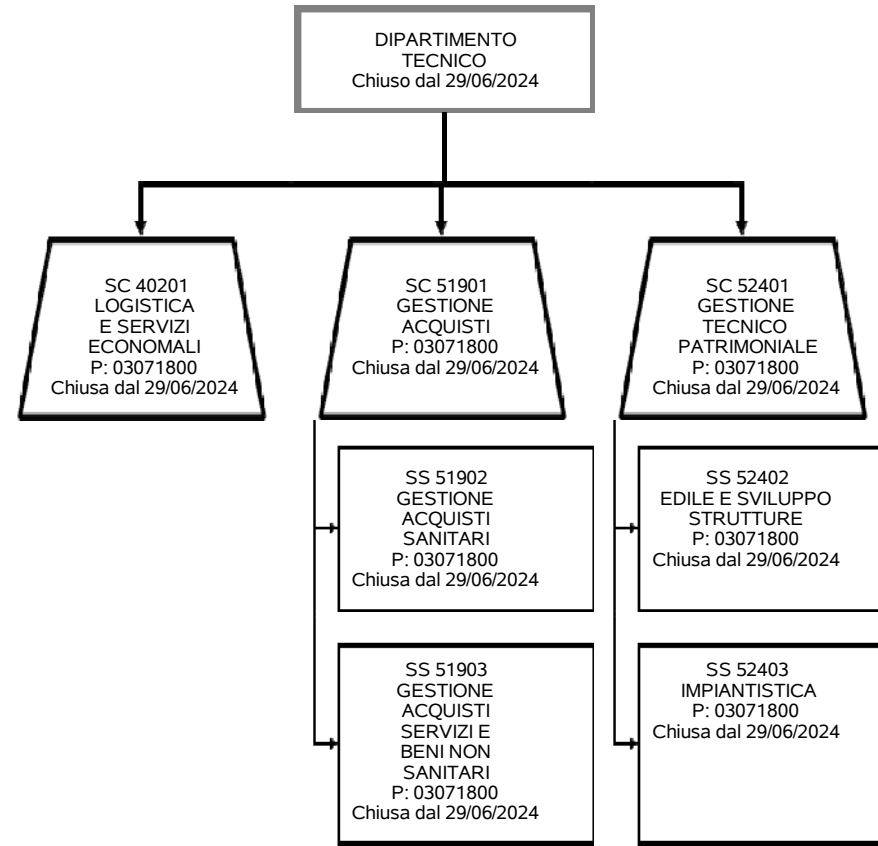
Relazione Funzionale

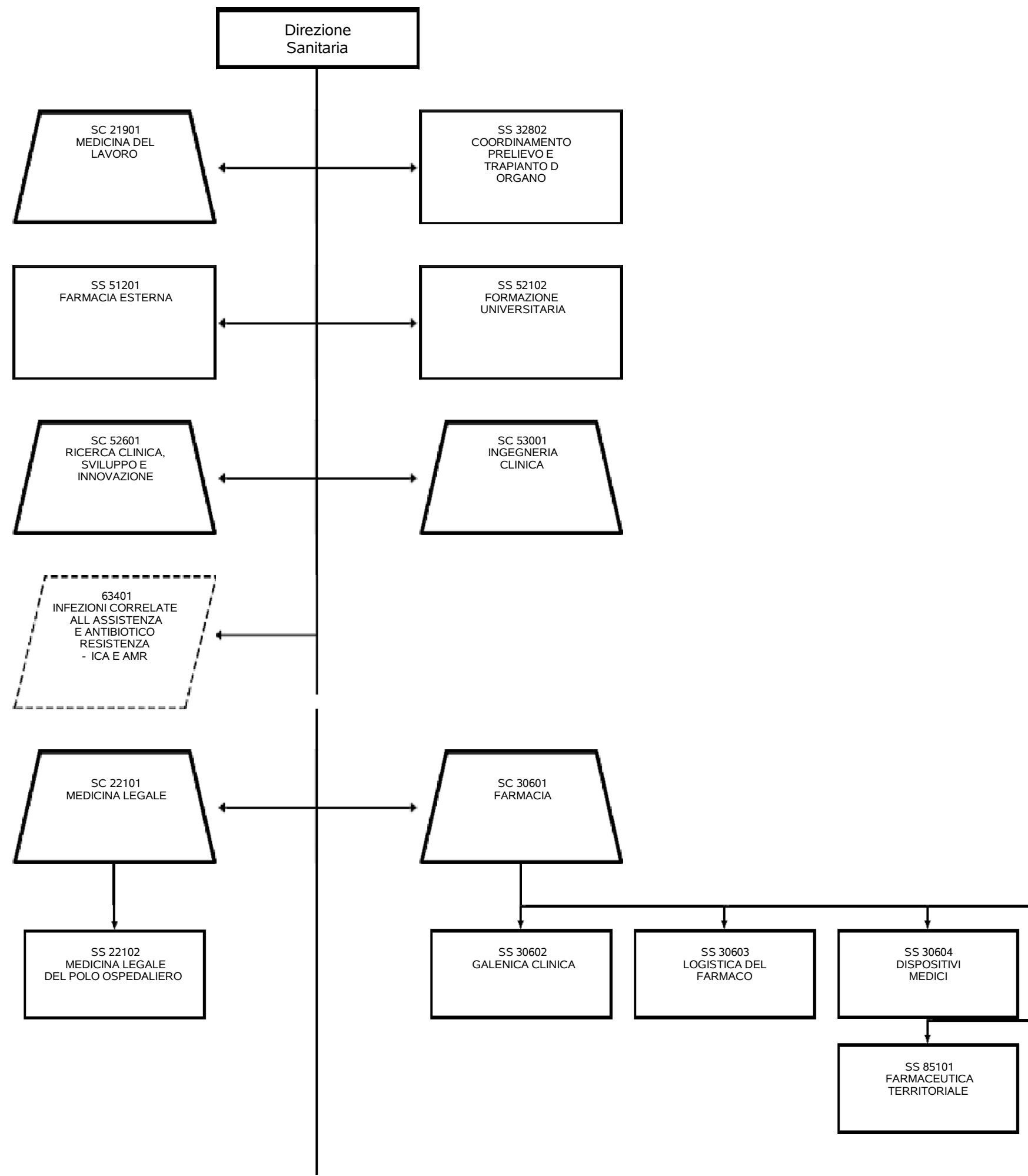


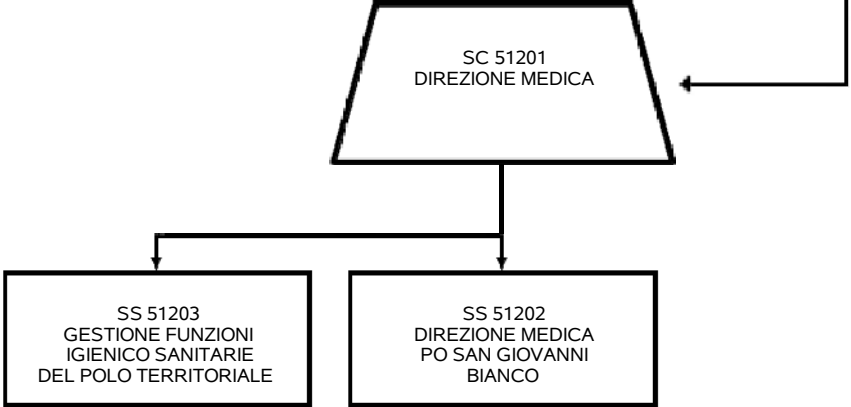


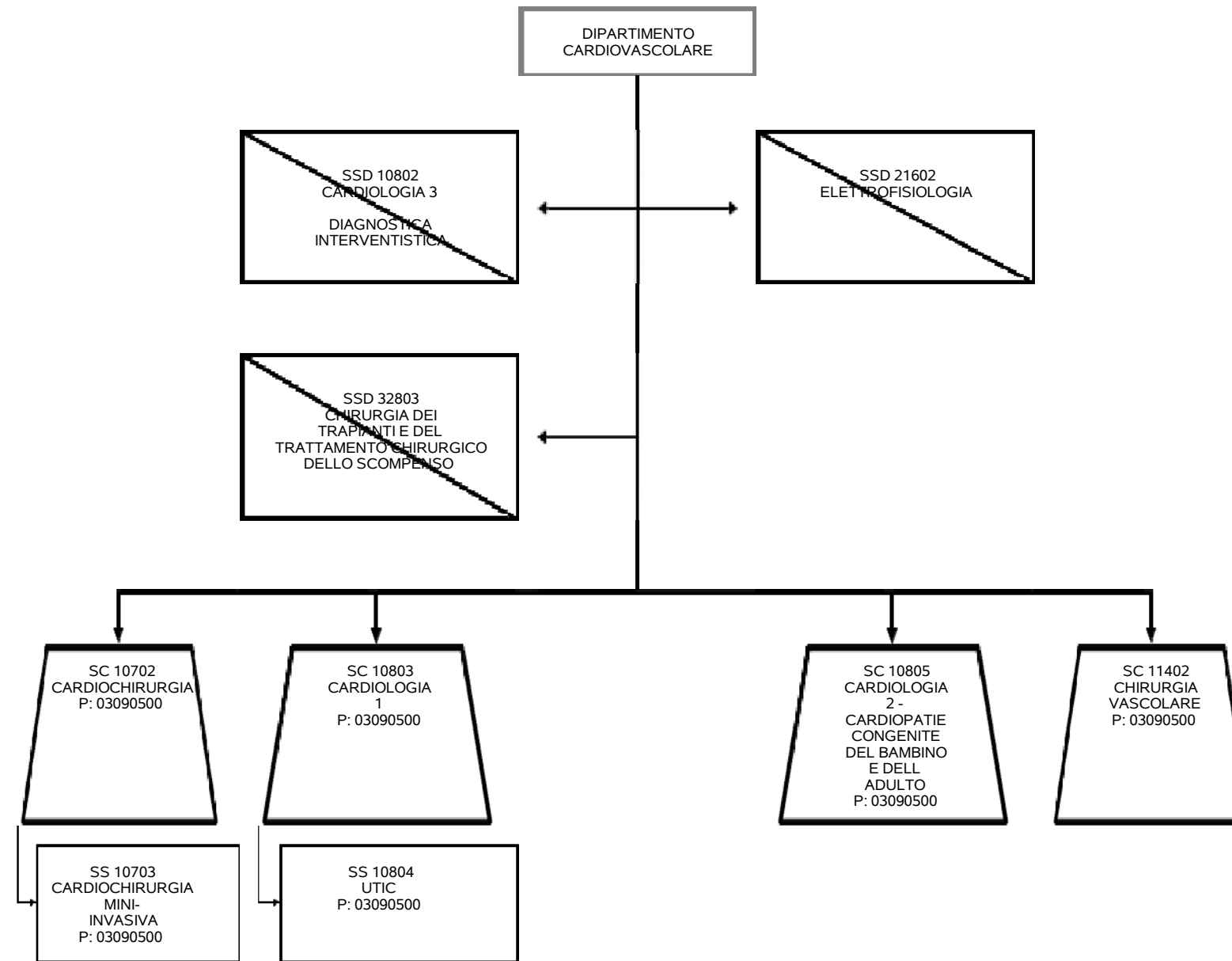


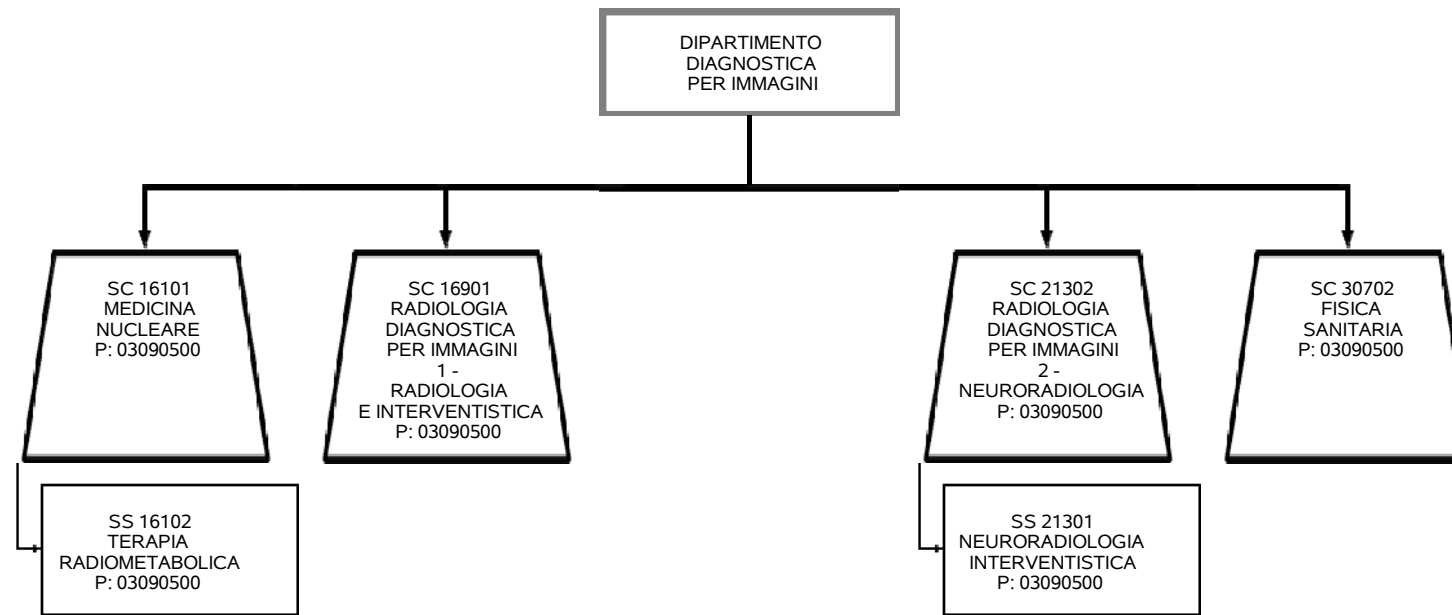


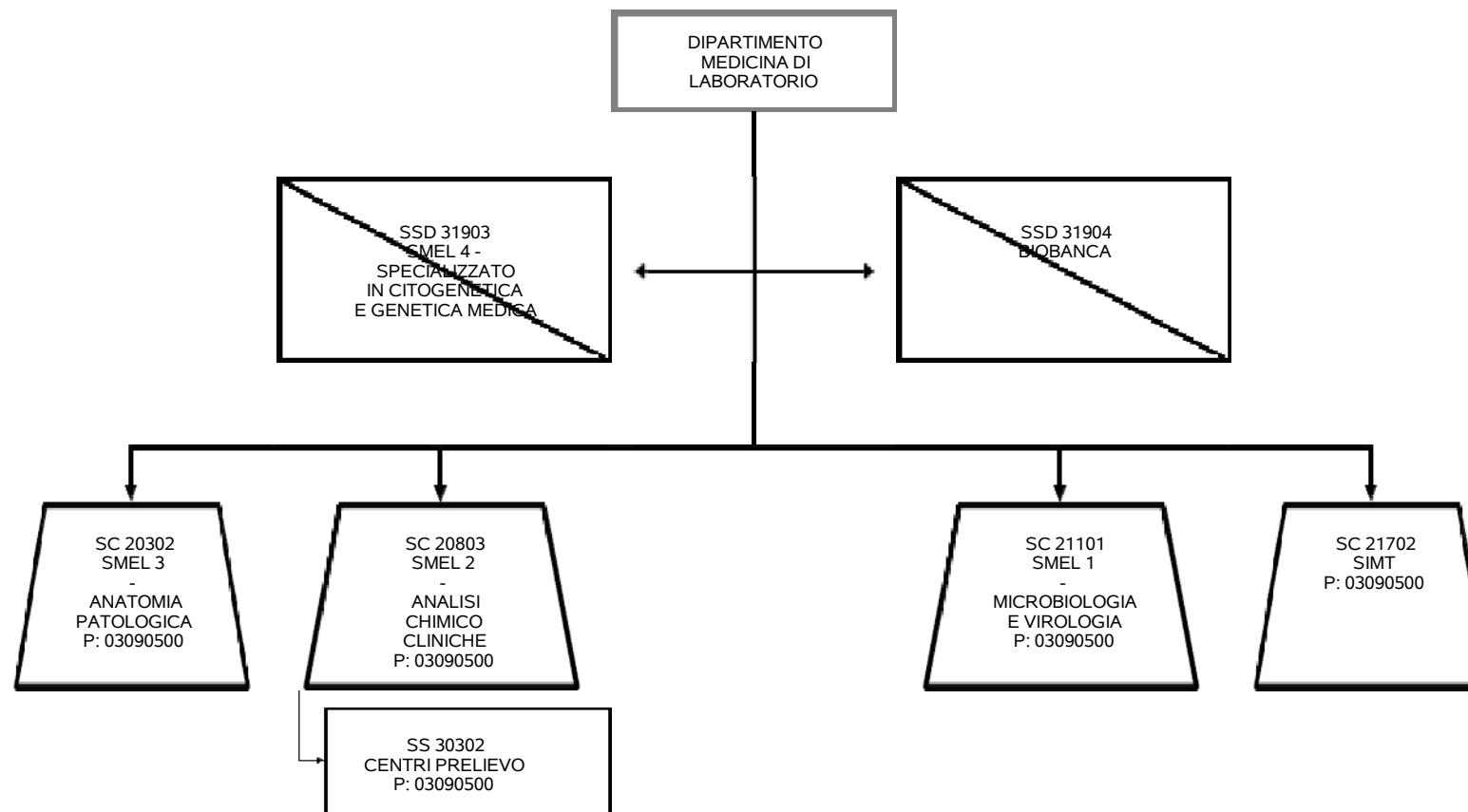


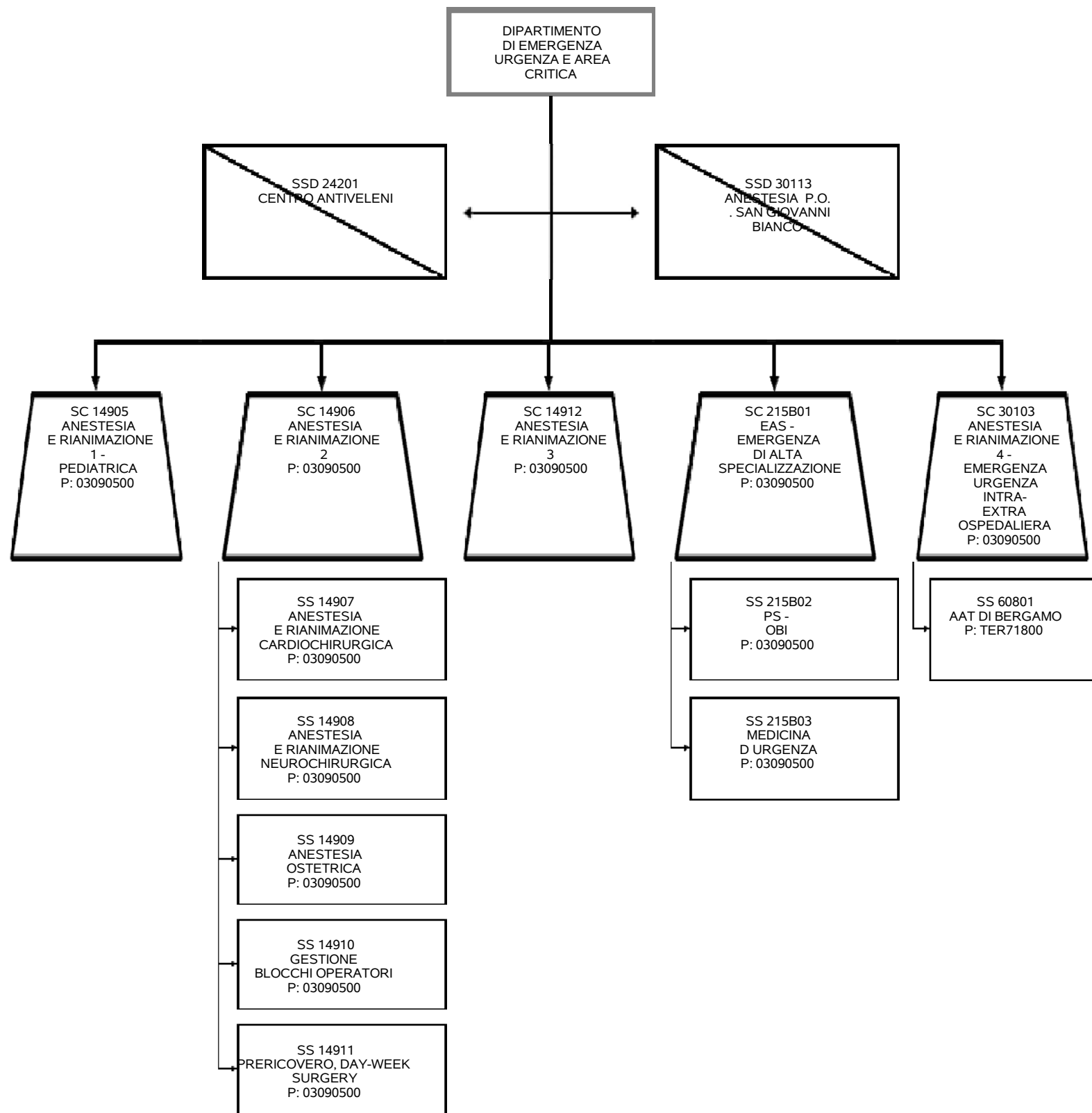


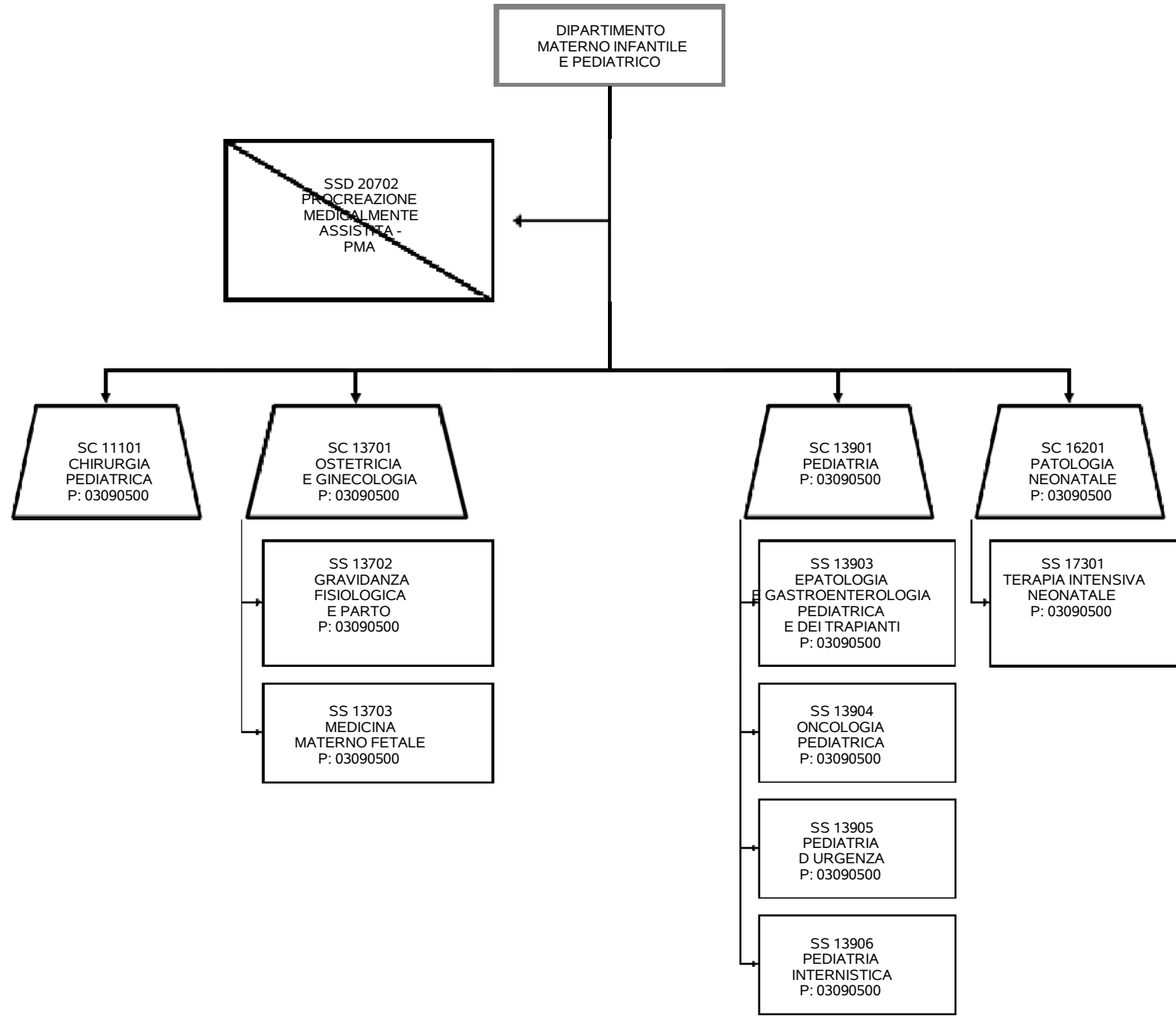


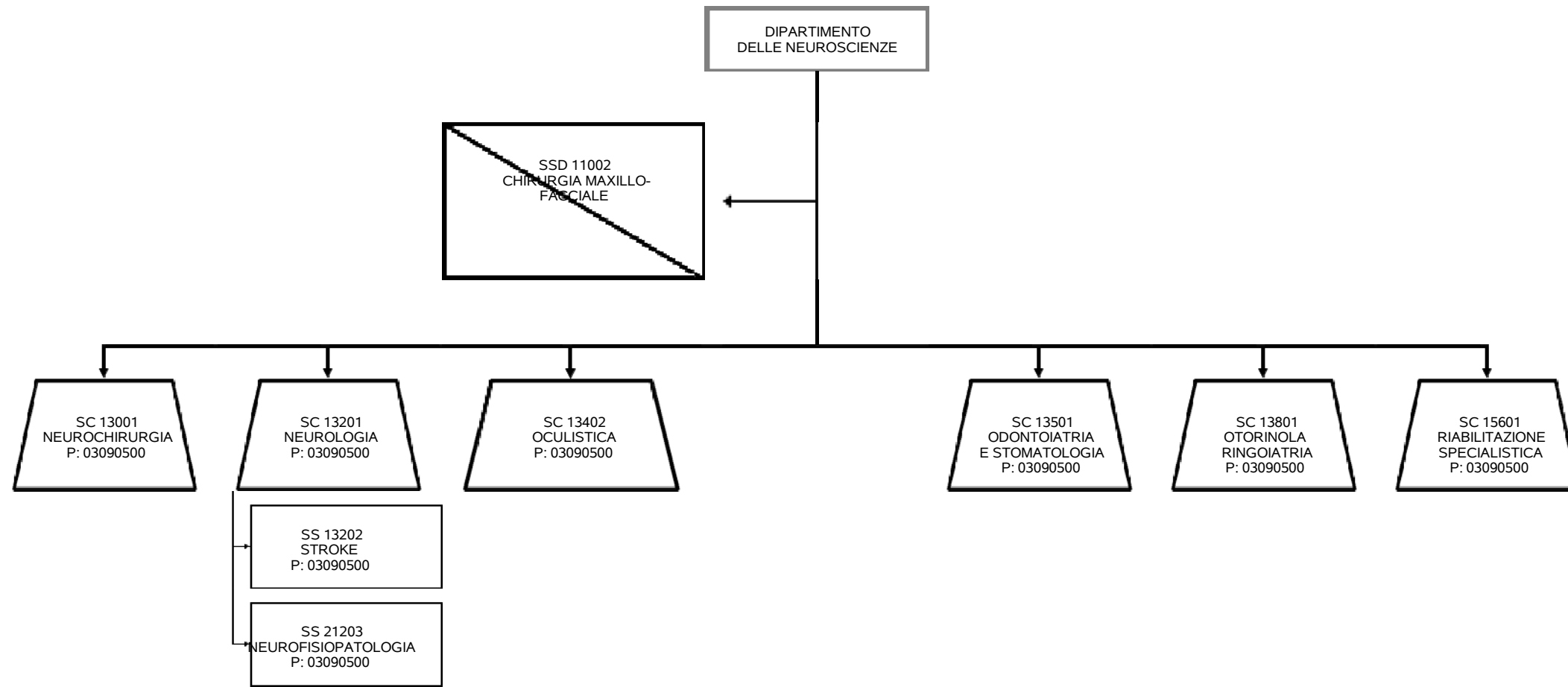


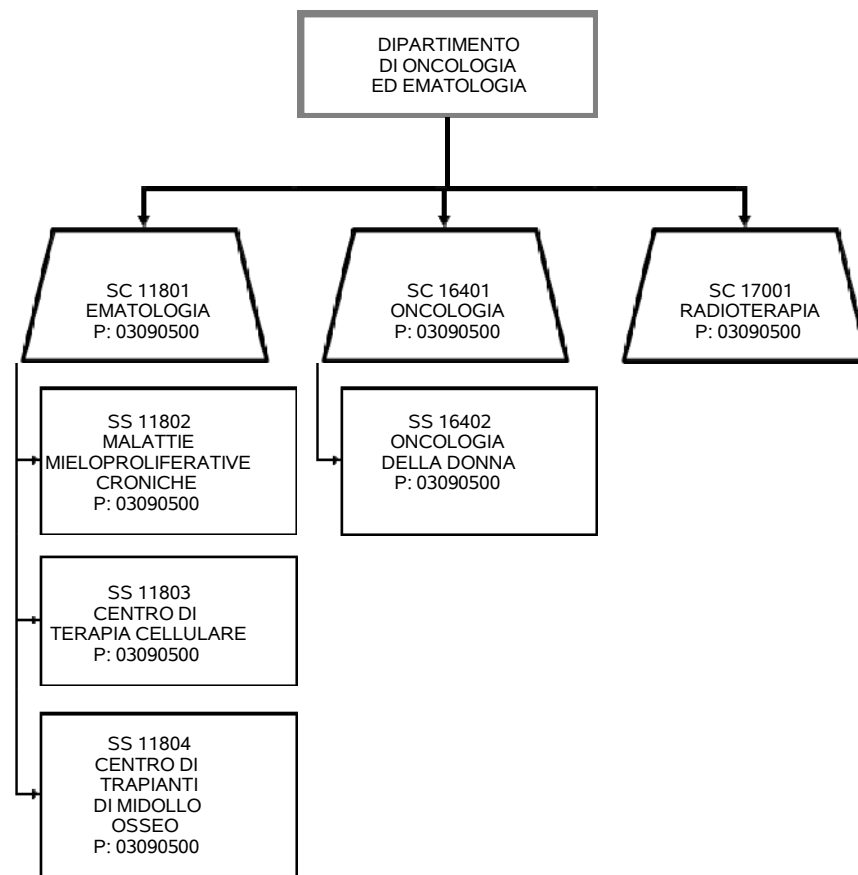


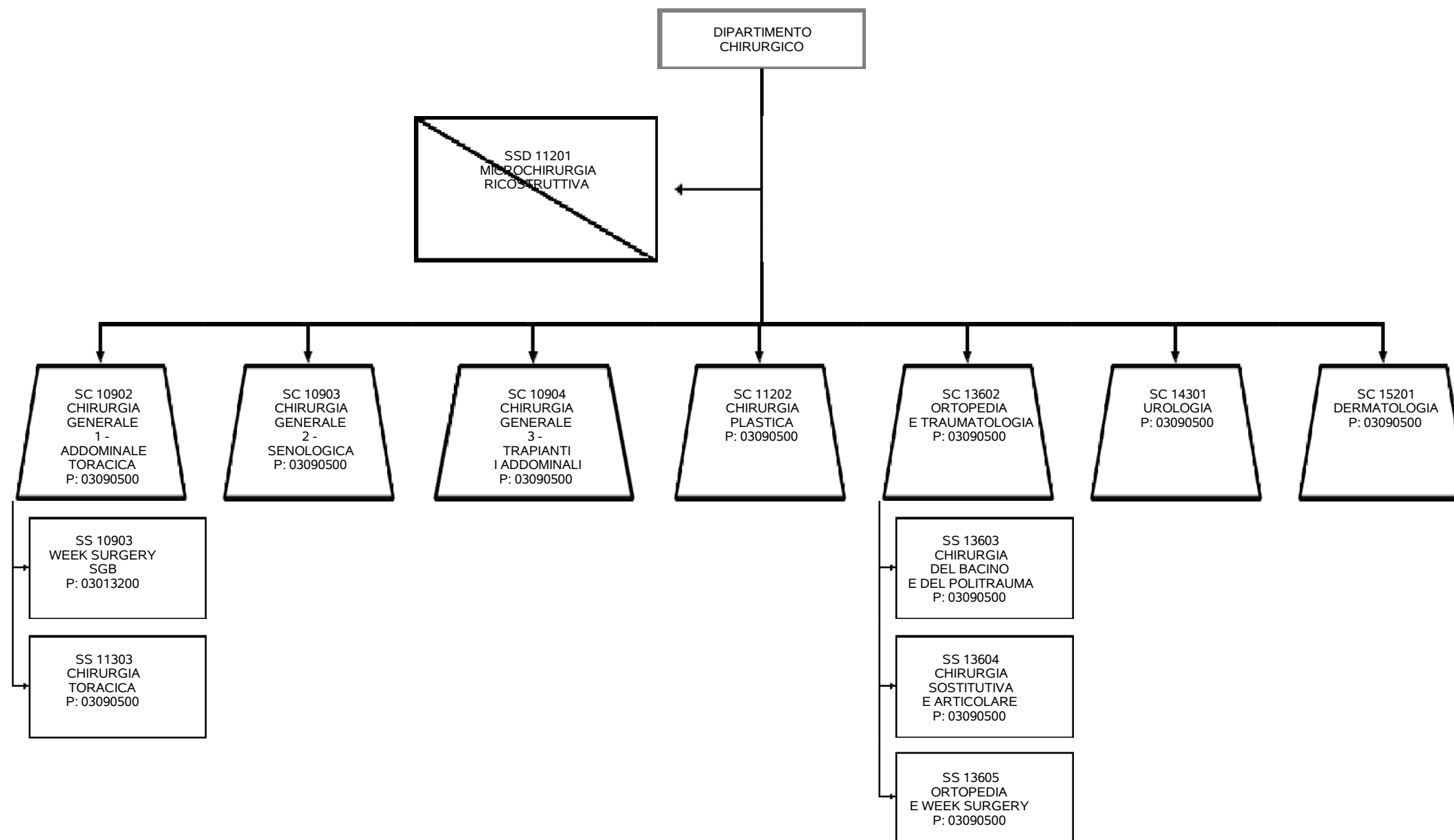


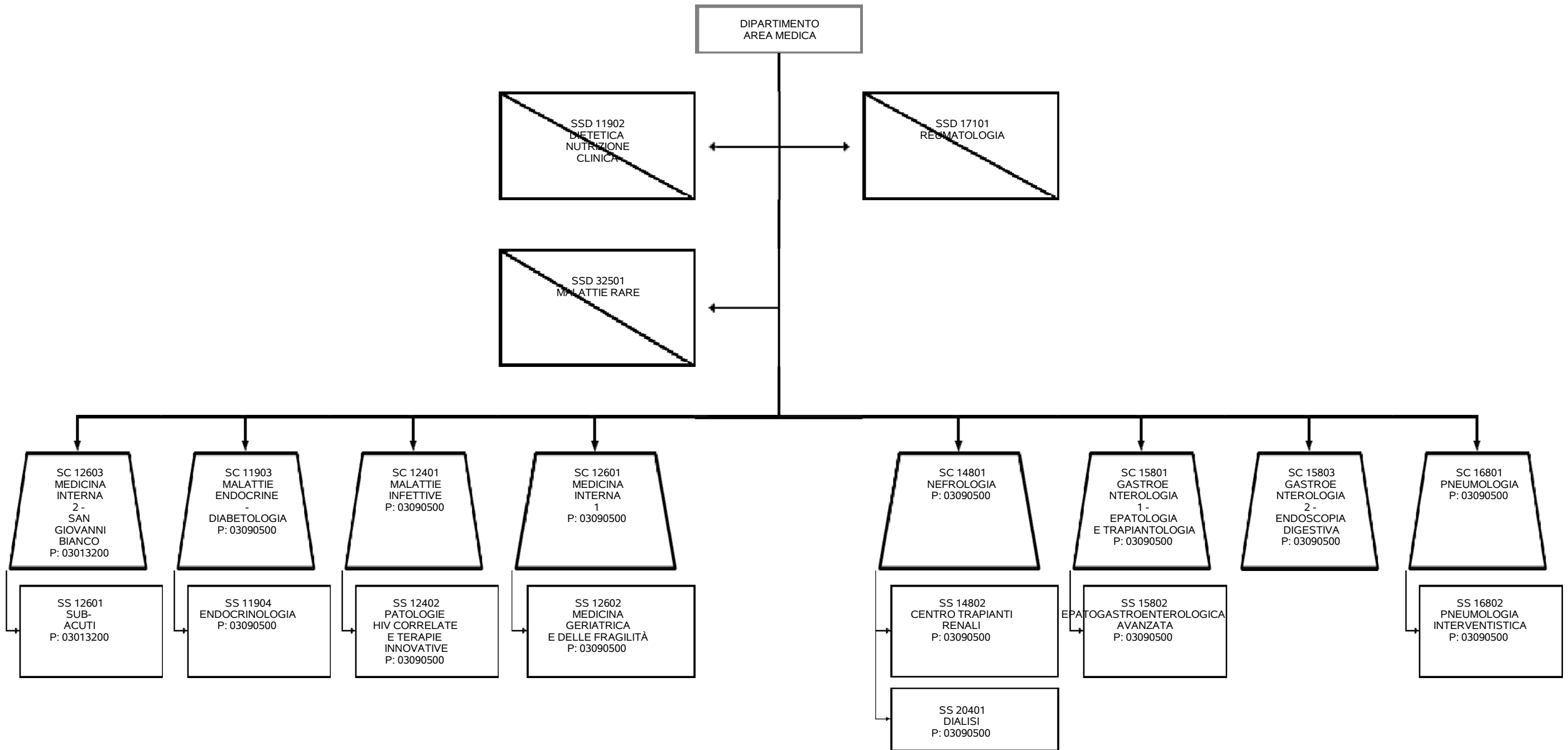


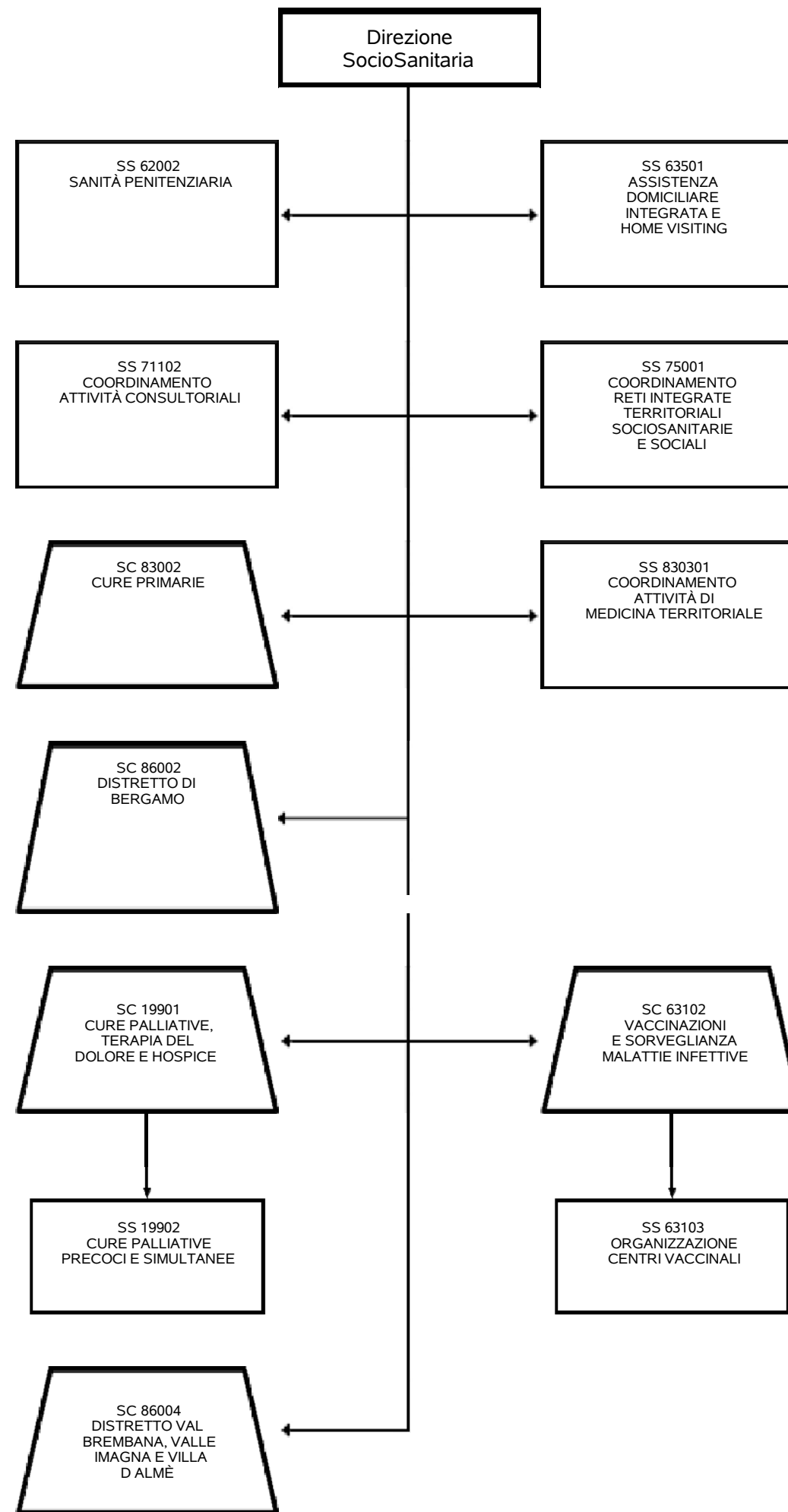


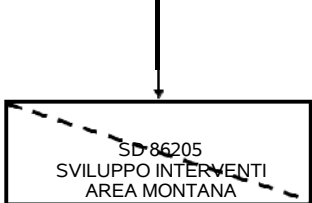


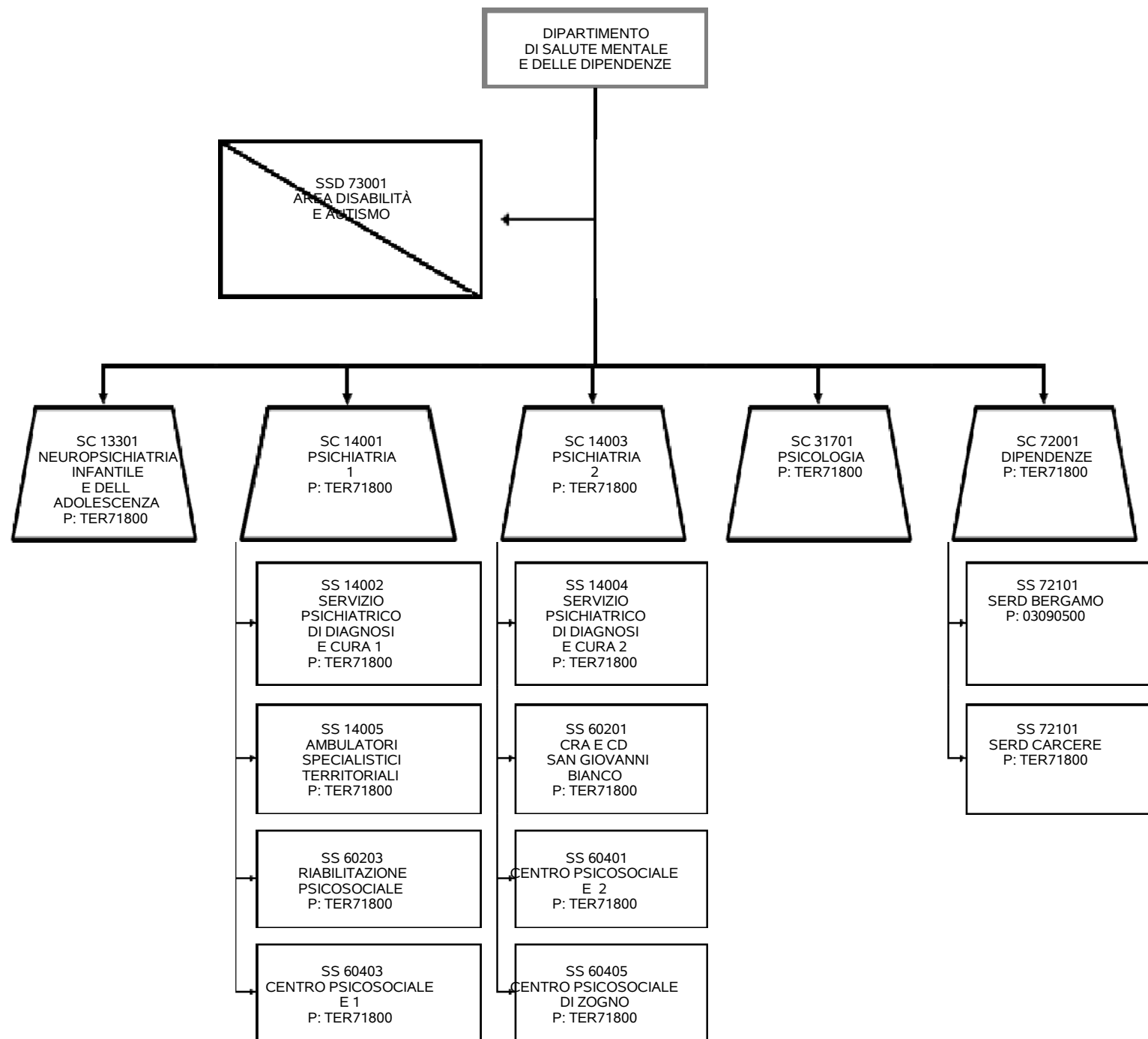


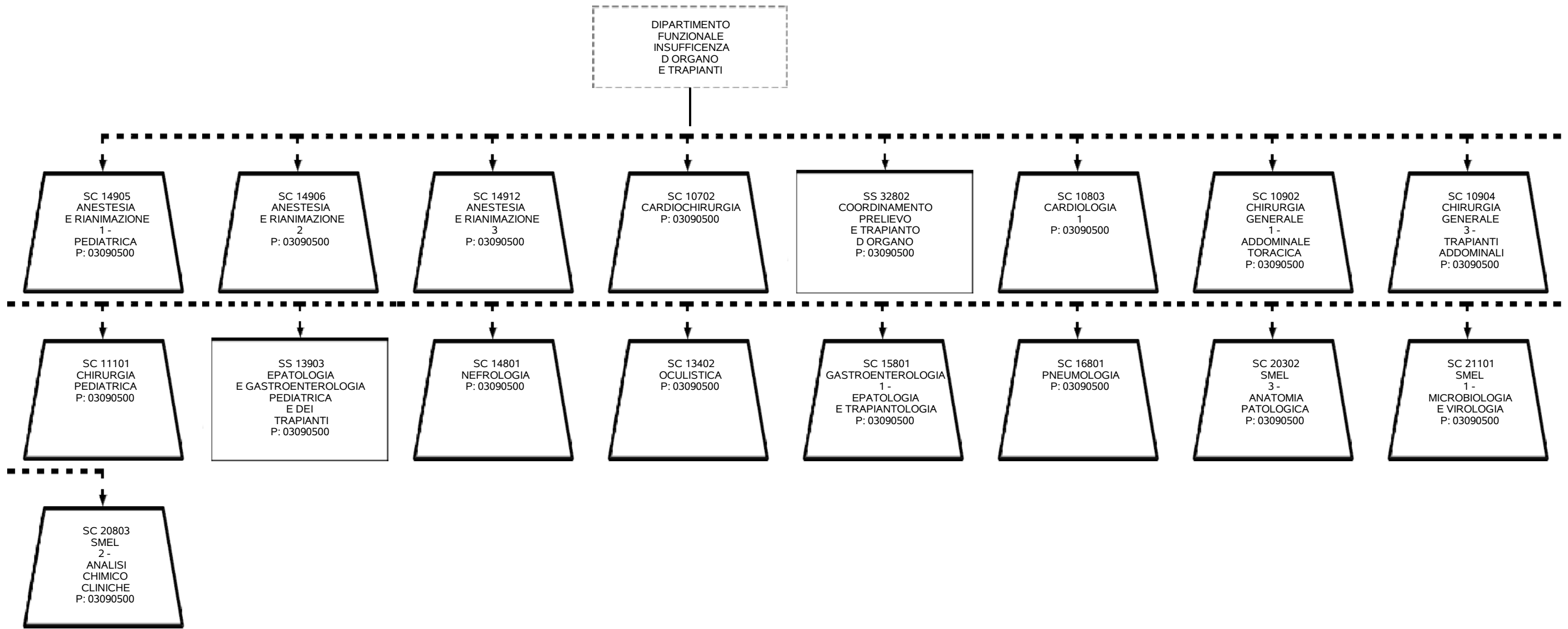


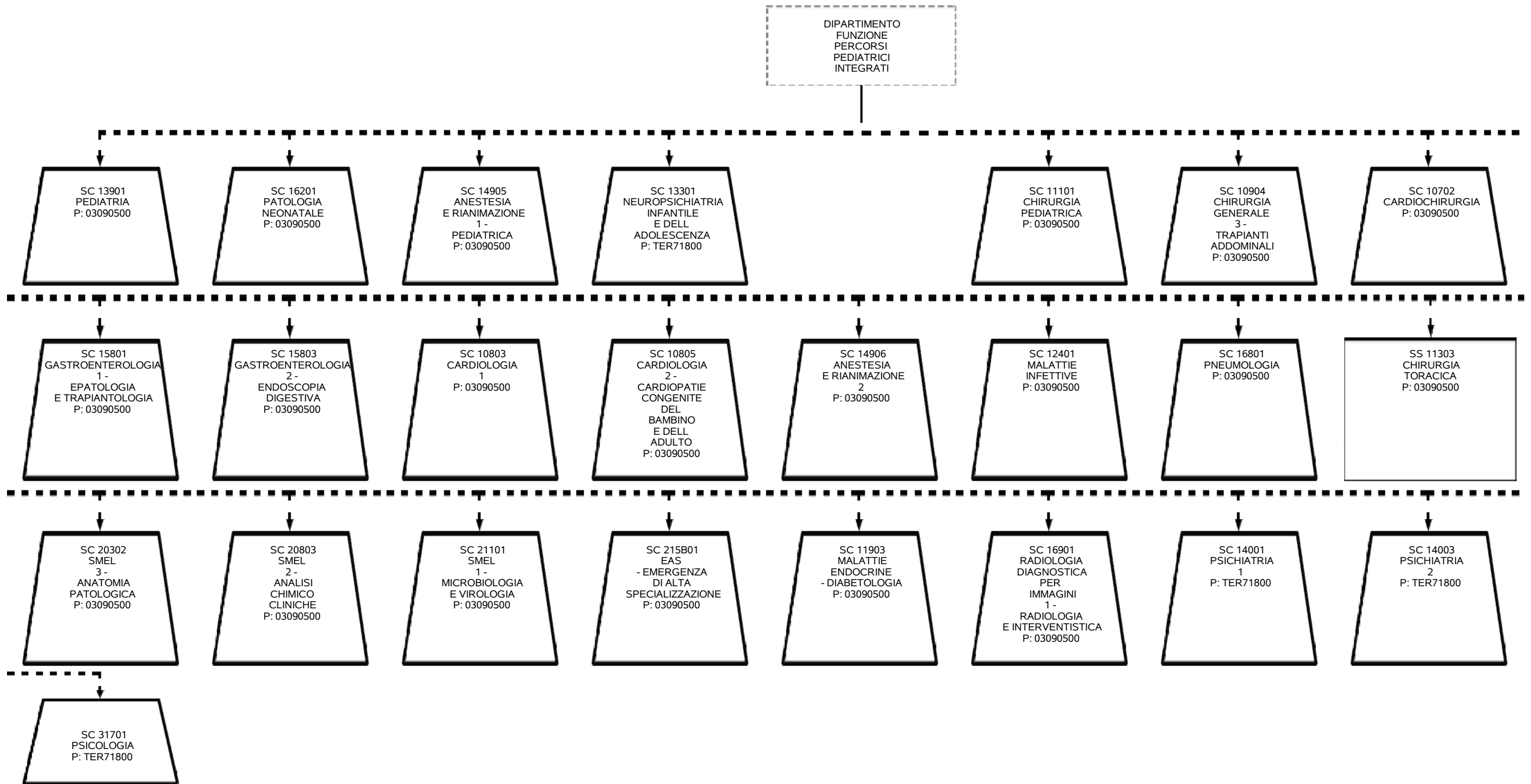


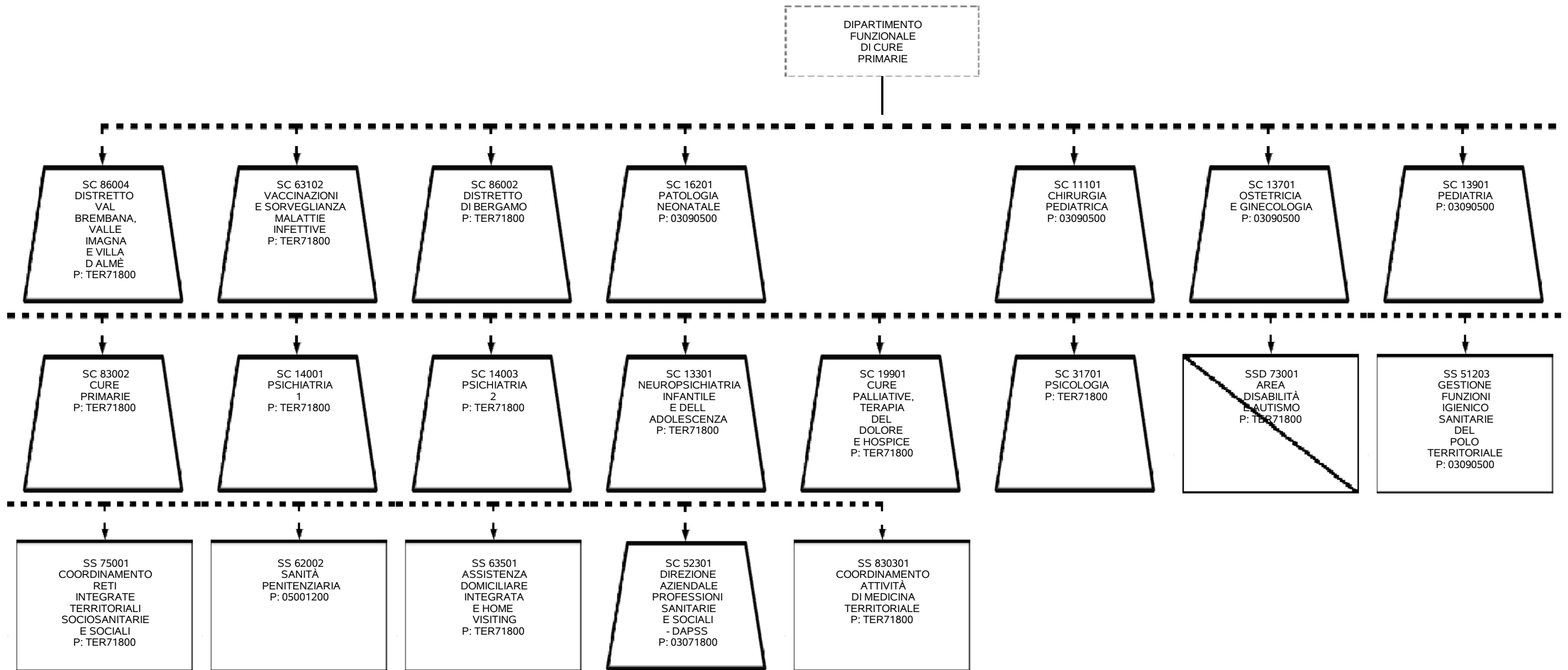


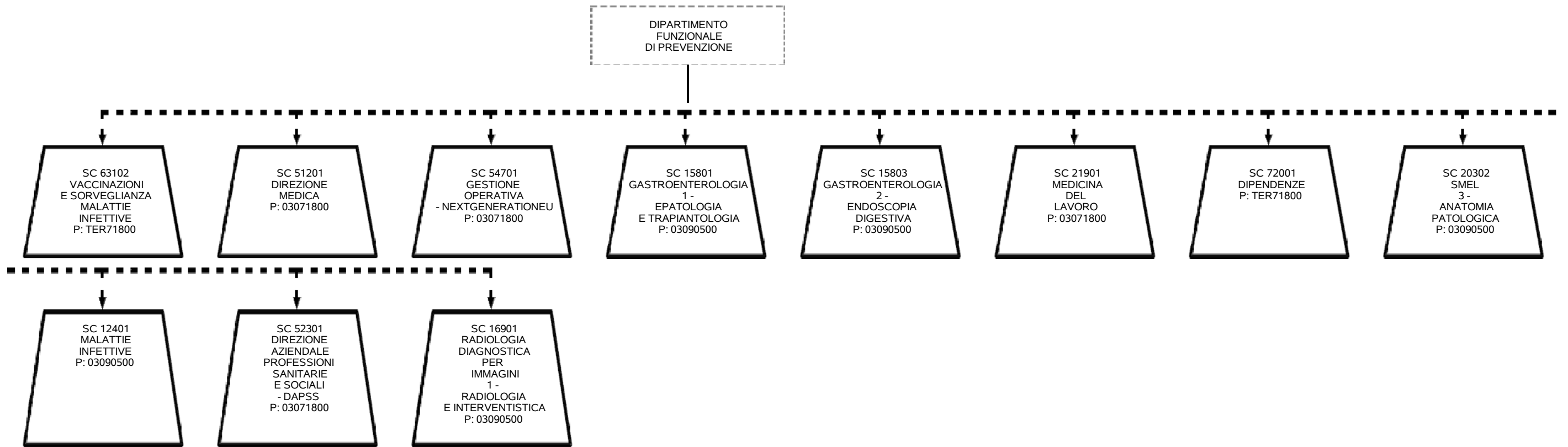


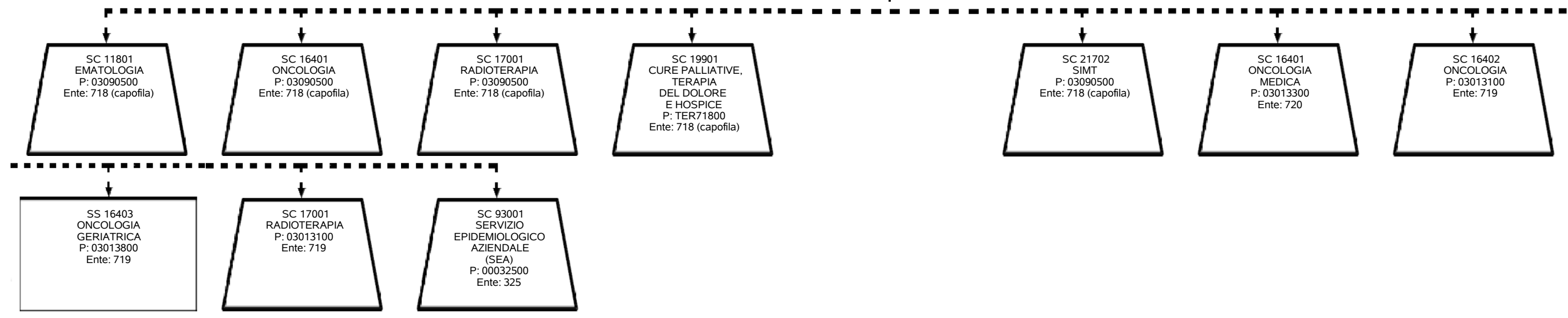




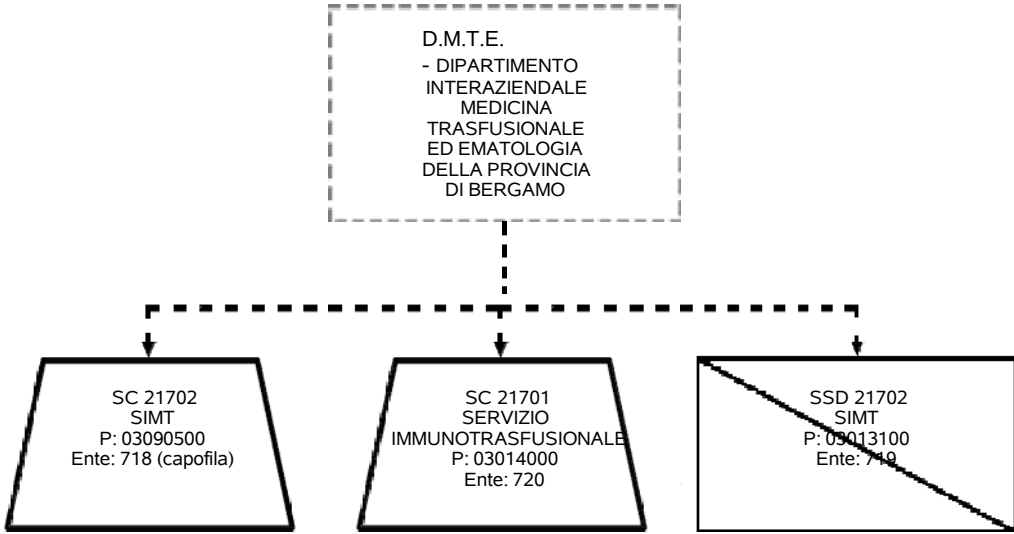




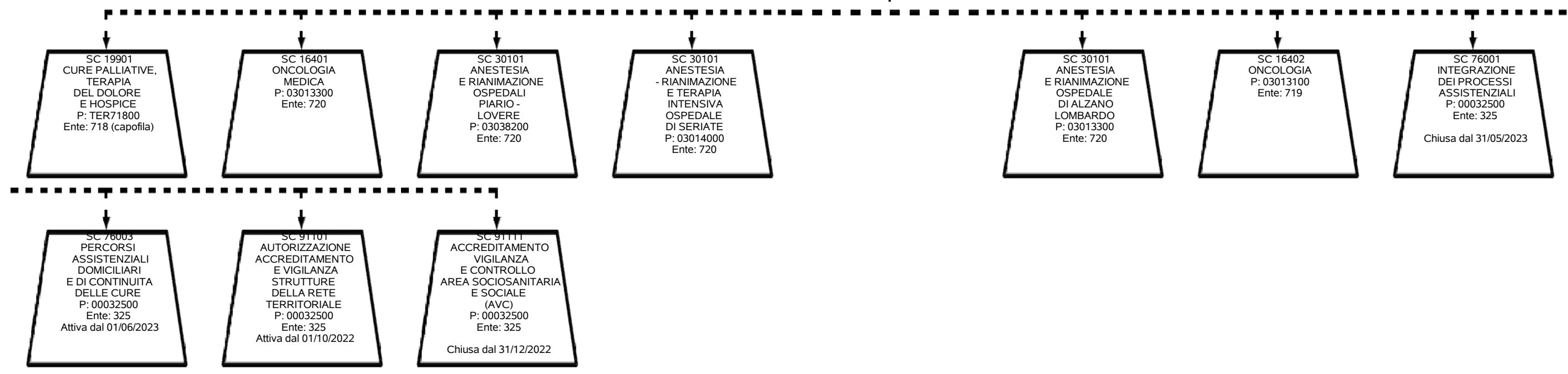




ORGANIGRAMMA PROPOSTO - ASST PAPA GIOVANNI XXIII - Direzione Sanitaria - Dipartimento Funzionale Interaziendale D.M.T.E. - DIPARTIMENTO INTERAZIENDALE MEDICINA TRASFUSIONALE ED EMATOLOGIA DELLA PROVINCIA DI BERGAMO



DIPARTIMENTO
INTERAZIENDALE
CURE PALLIATIVE



Codice Funzione	Descrizione Funzione	Codice Staff di Direzione	Descrizione Staff di Direzione	Presidio Afferenza SC	Codice Afferenza SC	Descrizione Afferenza SC
50301	FUNZIONI DI CULTO	SDG01	STAFF DELLA DIREZIONE GENERALE			
528B01	MEDICO COMPETENTE ED ATTIVITÀ DI SORVEGLIANZA SANITARIA DEL PERSONALE	SDG01	STAFF DELLA DIREZIONE GENERALE			
63401	INFEZIONI CORRELATE ALL'ASSISTENZA E ANTIBIOTICO RESISTENZA - ICA E AMR	SDS01	STAFF DELLA DIREZIONE SANITARIA			
FUN01	RESPONSABILE DELLA PROTEZIONE DEI DATI - RPD	SDG01	STAFF DELLA DIREZIONE GENERALE			
FUN02	COORDINAMENTO ATTIVITÀ DI CONTROLLO	SDG01	STAFF DELLA DIREZIONE GENERALE			

Codice Funzione	Descrizione Funzione	Codice Dipartimento Gestionale	Descrizione Dipartimento Gestionale	Codice Direzione	Descrizione Direzione	Presidio Afferenza SC	Codice Afferenza SC	Descrizione Afferenza SC
63201	INFEZIONI SESSUALMENTE TRASMISSIBILI - IST	DSM01	DIPARTIMENTO AREA MEDICA	DS	Direzione Sanitaria	03090500	12401	MALATTIE INFETTIVE